



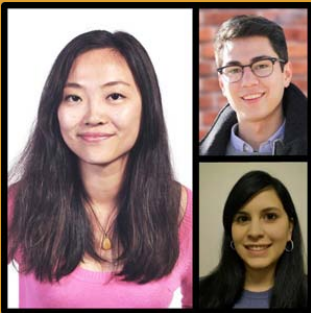
In This Issue

[2014 Scholarship Winners](#)
[Paleoethnobotany Research](#)
[Landscape Performance at CELA](#)
[Vectorworks and Performance](#)

Quick Links

[Donate Now](#)
[LAF Website](#)
[Contact Us](#)

Scholarship Winners



Three scholarships awarded so far! We'll update our website as juries make their decisions, so check back to see the recipients of the over \$40,000 in awards. [More](#)

"This generous award will allow me to dedicate myself fully to completing my education and entering the profession."

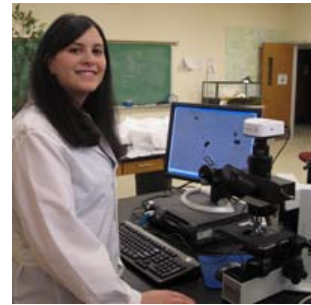
-- LAF Scholarship Winner

We are just back from the annual Council of Educators in Landscape Architecture (CELA) Conference -- what a delight to see all the talented and passionate educators who are developing the next generation of practitioners! CELA's new Landscape Performance research track featured 18 presentation and panel sessions. As outlined in the new IPCC Report on Climate Change, the effects of climate change will continue to alter human society in the coming decades. This underscores the vital role that landscape performance research will play in developing future design solutions that maximize environmental, economic, and social benefits.

Barbara Deutsch
Executive Director

2014 GCA/Thomas Fellowship Winner Reshaping Perceptions of Pre-Colonial Virginia

Jessica Herlich, a PhD student in the Department of Anthropology at the College of William and Mary, has been awarded the 2014 Douglas Dockery Thomas Fellowship in Garden History and Design, which is sponsored by the Garden Club of America. Her proposal, "Algonquian Gardens in Tidewater Virginia," strives to understand the pre-colonial landscape, using "paleoethnobotanical and ethnohistorical information to challenge misconceptions of Algonquian gardens as being like those of Europeans, as small-scale interruptions within a vast and pristine wilderness, or as mere subsistence adaptations." The award jury commended Jessica's exceptional research experience, innovative approach, and very focused proposal. They felt that her overall research has the power to reshape perceptions of the pre-Colonial Chesapeake.



[Read More](#)

Landscape Performance Series



Buffalo Bayou Promenade
Houston, Texas
This \$15 million landmark project improved flood control capacity and transformed marginalized space beneath a freeway into a thriving waterfront park.
[See Case Study Brief](#)

Fast Fact Library
Office workers with views of nature report greater job satisfaction than those with no views or views without nature.
[More Fast Facts](#)

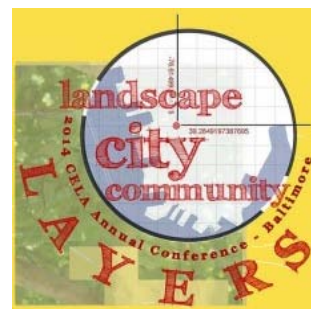
LPS on the Road

[Council of Educators in Landscape Architecture](#)
Baltimore, MD
Mar 26-29

[Duke Conservation Society 2014 Spring Symposium](#)
Durham, NC
Mar 28

Landscape Performance at CELA New Track Features 18 Presentations

The Council of Educators in Landscape Architecture (CELA) Conference in Baltimore wrapped up on Saturday. This CELA conference was the first to feature a Landscape Performance track, which included a total of 18 presentations and panels. LAF presented during three Concurrent Sessions, served as a Research Funding Workshop panelist, and hosted a meet-and-greet for our faculty program participants. Research from and about LAF's *Landscape Performance Series* and *Case Study Investigation (CSI)* program was part of six sessions. Thanks to the organizers at Morgan State University and the University of Maryland for a wonderful conference full of great dialogue and new insights!



[Learn More](#)

Vectorworks to Estimate Performance RA Investigates Software Tools and Metrics

LAF is continually looking for new tools and methods to evaluate landscape performance. Last fall, we asked Research Assistant Doug Robb (University of Toronto) to investigate how Vectorworks Landmark software could be used to estimate the performance of a given design. "For landscape architects, the greatest strength of Vectorworks Landmark lies in its ability to handle a wide variety of filetypes, and to modify these external files through the built-in Site Planning tool sets. These tool sets are analogous to pre-defined CAD blocks which cater specifically to the requirements of landscape design, from an extensive library of plant material and irrigation heads to site modifiers and grading tools. When used in tandem, these features allow a designer quickly to import a survey shapefile, modify the topography through massing models, hardscape, or planting, then begin to calculate site metrics such as runoff, cut and fill, and shading."



When used in tandem, these features allow a designer quickly to import a survey shapefile, modify the topography through massing models, hardscape, or planting, then begin to calculate site metrics such as runoff, cut and fill, and shading."

[Read More](#)

Special Thanks



SPJ Lighting recently became a "Mountain" level sponsor of LAF's 29th Annual Benefit, *New Heights*, which will be held in on Nov 21 in Denver. This event recognizes the 2014 Olmsted Scholars and raises critical funds to support LAF research and scholarship initiatives. SPJ Lighting is located in South El Monte, CA and specializes in sturdy and artistic outdoor lighting fixtures made from solid brass and copper.

[Donate Now](#)