



In This Issue

- [2013 Scholarships](#)
- [Applications for 2013 CSI](#)
- [New Olmsted Scholar Award](#)

Quick Links

- [Donate Now](#)
- [LAF Website](#)
- [Contact Us](#)

2013 Scholarships



LAF will award \$39,500 through 9 different scholarships and fellowships. Applications due Feb 1 and 15. [More](#)

Landscape Performance Series



Magnuson Park Seattle, Washington

By creating high performance wetlands along with sports fields on a former Navy airfield, this park serves both ecological and recreational needs. [See Case Study Brief](#)

Fast Fact Library

A 2008 Dutch study found that urban parks can promote social cohesion among different ethnic groups. [More Fast Facts](#)

LPS on the Road

LA EXPO
Long Beach, CA
Feb 8-9, 2013

Special Thanks



KORNEGAY
DESIGN LLC

In addition to their sponsorship of the Annual Benefit, Kornegay Design hosted a memorable evening for all Annual Benefit sponsors and the LAF Board of Directors the night before the Annual Benefit in Phoenix. Kornegay Design is dedicated to exceptional design and finely crafted cast concrete and wood site furnishings for distinguished commercial, retail, hospitality, streetscape, and residential projects.

Shop for LAF This Holiday Season!



Want to support LAF while shopping? You can help raise funds for LAF when you shop online this holiday season. A percent of all sales will go directly to LAF with no extra charge! You can also search the web or dine out and support LAF too! Find out [more here](#).

Donate Now

"The Landscape Architect is essential in maintaining the vital connection between man and nature." -LAF Founders, 1966

Hurricane Sandy is a powerful reminder that the many services and talents of landscape architects are so vitally needed to determine where we build and how we live. LAF was formed so that landscape architects may make their vital contribution. LAF is changing practice and design education to help landscape architects increase their impact at this critical time. On "Giving Tuesday", I ask you to consider investing in LAF and invite you to read on to see what giving back can do.



Barbara Deutsch
Executive Director

[Donate Today](#)

Case Study Investigation (CSI) 2013 Project Applications Due Nov 30 Research Fellow Applications Due Dec 31

Don't miss your chance to become a LAF Research Fellow or to assess and document the benefits of your firm's high-performing landscape projects. LAF is now accepting applications for the 2013 CSI program, which will run Mar 1- Aug 9. Faculty Research Fellows lead the research teams and receive funding to support a student Research Assistant. Fellows are selected through a two-part application process with Expressions of Interest due Nov 15 and full applications due Dec 31. Practitioners apply with specific projects and are selected based on the quality of the project(s) submitted, potential to produce comprehensive quantified benefits, availability of baseline information, and the firm's commitment to work with the research teams. Applications from firms are due Nov 30. [Learn More](#)



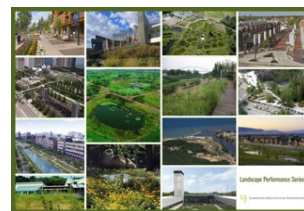
Developing Marketing Tools for Landscape Architects and Green Advocates CSI Research Fellows Leading the Way

In a new LAF video, LAF Research Fellows discuss the value of collaboration with designers through *Case Study Investigation* (CSI) to develop and document the benefits of high performing landscapes in the LAF case study brief format. The case studies are one of four types of resources in the *Landscape Performance Series*, which provides data and tools for designers, developers, planners, and advocates to make the business case for more sustainable landscape solutions. [See the Video](#)



LAF Offers \$22,500 in LPS Research Grants Expression of Interest Due Dec 15

The Landscape Architecture Foundation is pleased to announce an exciting research opportunity to analyze the content of the *Landscape Performance Series* Case Study Briefs. LAF is now accepting Expressions of Interest from teams or individuals who would assess the metrics and methods for quantifying the benefits employed in current case studies, and make recommendations to build upon the techniques for use in future cases. [Learn More](#)



Olmsted Scholars Program New \$15,000 Award for Undergraduates

LAF is pleased to announce a new \$15,000 award for undergraduate students as part of its renowned *Olmsted Scholars Program*. The new \$15,000 award complements the existing \$25,000 award, which will now be available only to graduate nominees. Previously, undergraduate students had to compete with graduate students both for their school's nomination and for the national award. "The new award will recognize the high level of talent and leadership potential present in undergraduate programs," said LAF Executive Director Barbara Deutsch, FASLA. "LAF is delighted to offer such a significant financial award exclusively for undergraduate students." [Read More](#)

